

Padthaway Water Allocation Plan

Consumptive pools

3

Limestone Coast Landscape Board

Water allocation plans establish rules and limits on the taking and use of water resources prescribed under the *Landscape South Australia Act 2019*. The consumptive pools are defined in the water allocation plan to support sustainable water management and use.

What is a consumptive pool?

A consumptive pool is a defined amount of water that can be made available for consumptive uses within a prescribed water resource area.

What are the consumptive pools in the consultation draft of the Padthaway Water Allocation Plan?

There are three consumptive pools proposed for the Padthaway Prescribed Wells Area:

1. The Padthaway Unconfined Aquifer Consumptive Pool
2. The Padthaway Confined Consumptive Pool
3. The Padthaway Managed Aquifer Recharge Consumptive Pool

The Padthaway unconfined aquifer consumptive pool and the Padthaway managed aquifer recharge consumptive pool will include Management Zones that will assist in managing resource condition and impacts associated with extraction of water. Both consumptive pools will have two management zones known as the Padthaway Flats Management Zone and the Padthaway Range Management Zone which will be geographically defined and replace the previous Padthaway Flats and Range Management Areas.

The Padthaway confined consumptive pool will not have any associated management zones.

Volumes of water available for extraction will transition from the previous management areas to the relevant consumptive pool and management zone. These volumes will not change from the 2009 Padthaway water allocation plan and will remain to account for the quality and quantity of water required to maintain the

- condition and function of each aquifer
- maintenance of groundwater-dependent ecosystems
- ongoing demand.

The available volume for extraction includes licenced use for irrigation purposes as well as unlicensed use including for stock and domestic purposes and authorised water uses such as firefighting and road making.

The volume of water available for extraction from the Padthaway managed aquifer recharge consumptive pool if desalinated groundwater is equal to 100% of the metered volume of water that has been injected or drained into the unconfined aquifer.

The volume of water available for extraction from the Padthaway managed aquifer recharge consumptive pool if injected or drained surface water is equal to 90% of the metered volume of water that has been injected or drained into the unconfined aquifer.

Each water access entitlement on a water licence will refer to the consumptive pool that it relates to (see Fact Sheet 1: Water Licence Instruments).

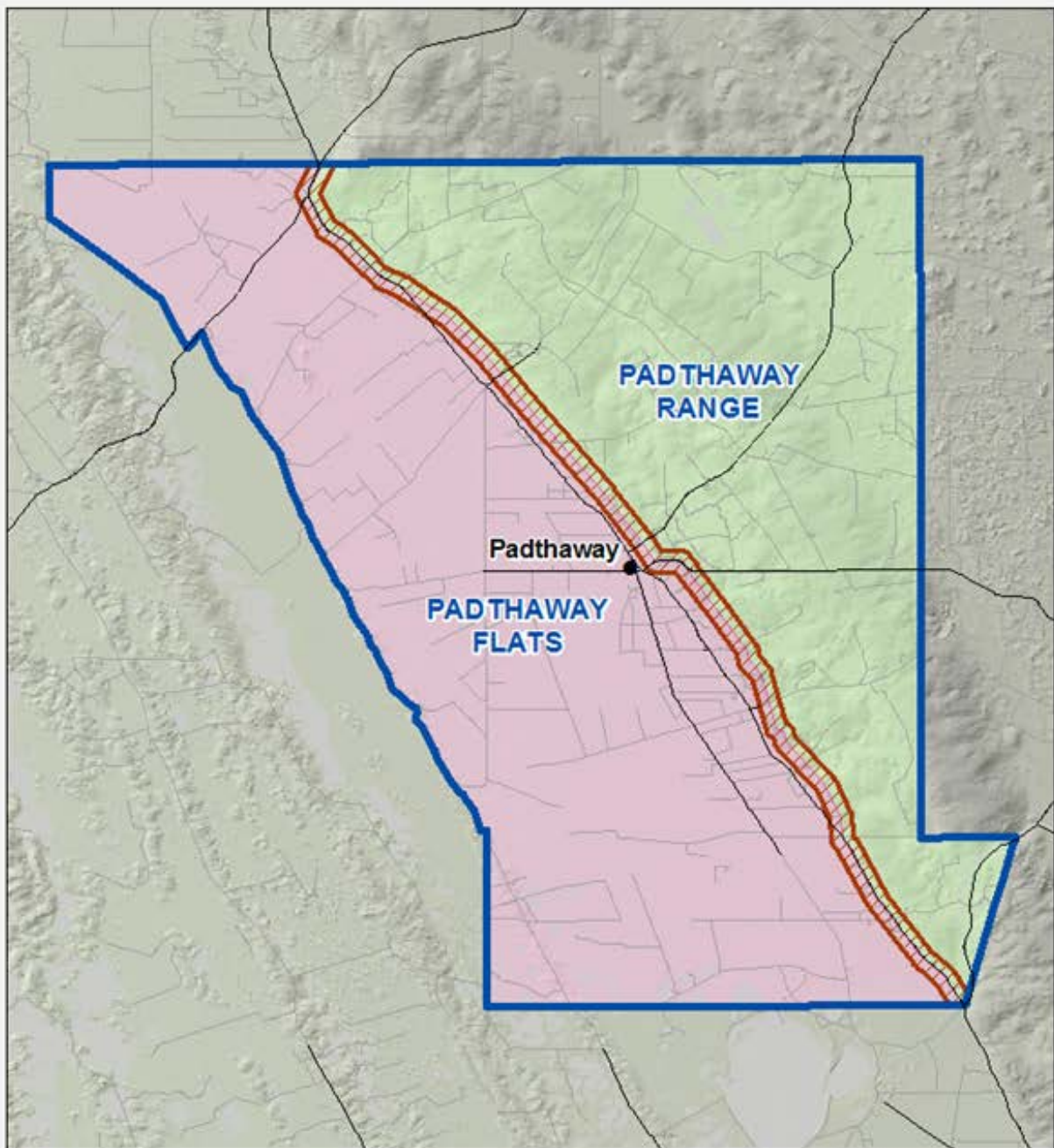
Acknowledgment

The content of this publication has been produced by the Limestone Coast Landscape Board, Copyright 2023.

Disclaimer

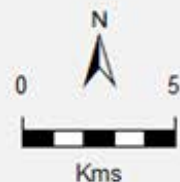
Although reasonable care has been taken in preparing the information presented in this publication, neither the Limestone Coast Landscape Board nor the other contributing authors accept any responsibility or liability for any losses of whatever kind arising from the interpretation or use of the information set out in this document. Where products and/or their trade names are mentioned, no endorsement of these products is intended, nor is any criticism implied of similar products not mentioned.

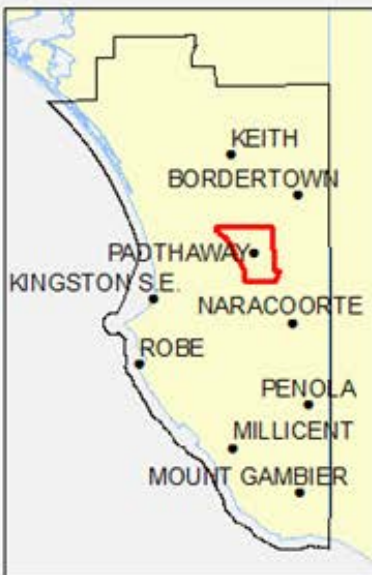
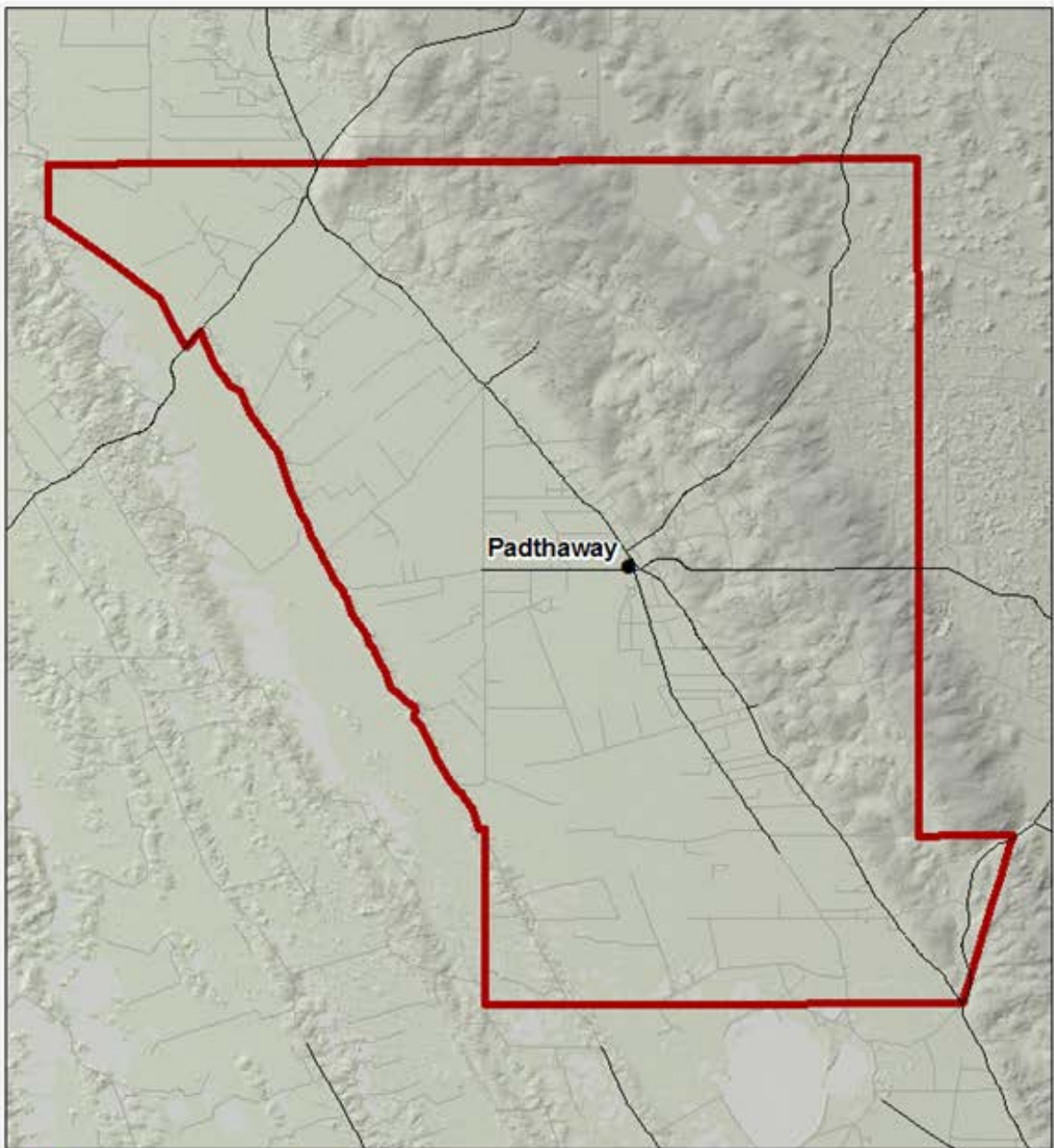
202135 | Padthaway WAP Consumptive Pools | Reissued March 2023



Legend

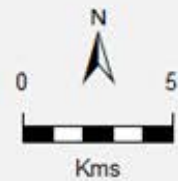
-  The Padthaway Unconfined Aquifer Consumptive Pool
-  Padthaway Flats Management Zone
-  Padthaway Range Management Zone
-  Limited Extraction Zone
-  Sealed Roads
-  Unsealed Roads

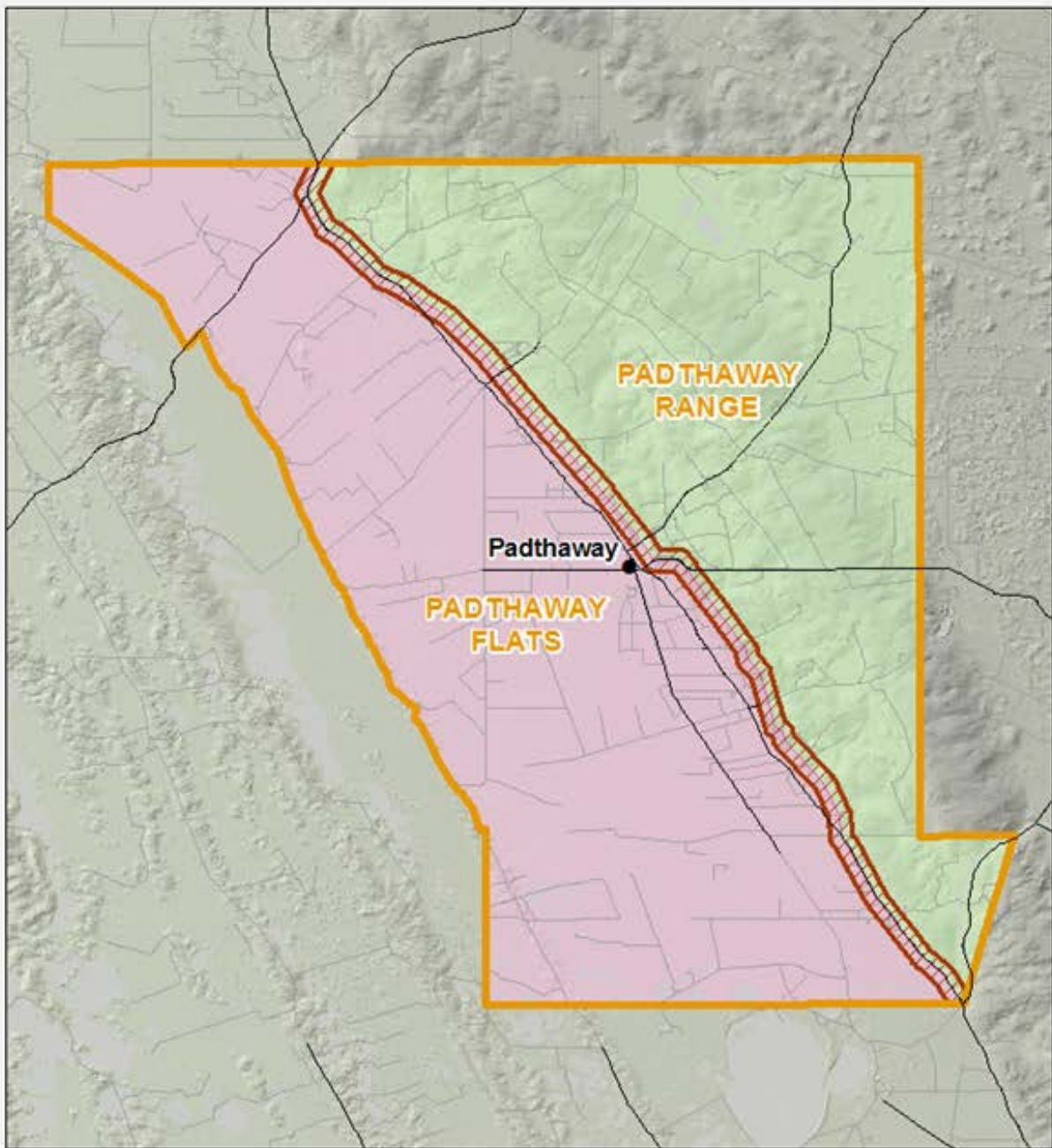




Legend

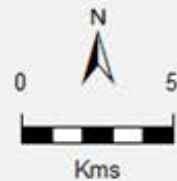
- The Padthaway Confined Aquifer Consumptive Pool
- Sealed Roads
- Unsealed Roads





Legend

-  The Padthaway Managed Aquifer Recharge Consumptive Pool
-  Padthaway Flats Management Zone
-  Padthaway Range Management Zone
-  Limited Extraction Zone
-  Sealed Roads
-  Unsealed Roads



LANDSCAPE
SOUTH AUSTRALIA
LIMESTONE COAST